

Cheshire West & Chester Council

# Museums, Exhibitions & Events

February - May 2019



**GROSVENOR  
MUSEUM**



**Chester  
HISTORY  
& HERITAGE**



**Stretton  
WATERMILL**



**WEAVER HALL  
Museum & Workhouse**



**LION  
SALT  
WORKS**



**WEST CHESHIRE  
MUSEUMS**



**Cheshire West  
and Chester**

# Grosvenor Museum, Chester

27 Grosvenor Street, Chester, CH1 2DD

Located in England's most picturesque city, the Grosvenor Museum's nationally important collections celebrate Chester's cultural heritage. The Roman galleries explore life in the Roman fortress of Deva and display the largest group of inscribed and sculpted Roman stones from a single site in Britain. The paintings and sculpture in the Art Gallery span half a millennium of art in Cheshire, while the Silver Gallery presents the definitive collection of Chester silver. Nine period rooms illustrate changing fashions in domestic interiors from the 17th century to the 1920s. Further galleries explore the area's natural history and display highlights of the costume and coin collections.



## Admission free - donations welcome

Monday – Saturday 10.30am-5pm, Sunday 1-4pm.  
Closed Good Friday 19 April..



Telephone 01244 972197

Find us on Facebook: Grosvenor Museum and Stretton Watermill

Follow us on Twitter @cwacmuseums

Website: [www.westcheshiremuseums.co.uk](http://www.westcheshiremuseums.co.uk)

## Support us

The Grosvenor Museum Society provides vital support for the museum. Members of the society enjoy a full and varied programme of events, including lectures and outings. See [www.grosvenor-museum-society.co.uk](http://www.grosvenor-museum-society.co.uk).

## Volunteers

Please see all West Cheshire Museums volunteering roles on the website [www.westcheshiremuseums.co.uk](http://www.westcheshiremuseums.co.uk)

## Disabled access

Wheelchair access to the ground floor, including Exhibition Gallery One, Lecture Theatre and accessible toilet. No lift to Art Gallery, Costume Gallery or Exhibition Gallery Two on first floor.





# Exhibitions

Grosvenor Museum, Chester

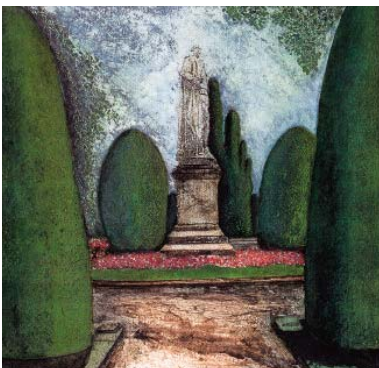
Until 24 February

## Memento Mori: Tombs and Memorials in Cheshire

Exhibition Gallery Two

As we remember the centenary of the end of the Great War, this exhibition presents watercolours, drawings, prints, photographs and sculpture showing how Cheshire has commemorated its dead from the Romans to the present day. With tombstones, tomb-chests and mural slabs, public sculptures, cenotaphs and a shrine, the imagery of commemoration ranges across the centuries with knights and their ladies, parents and their children, skeletons and skulls, heraldry, saints and angels.

*Supported by the Megan Gwynne-Jones Charitable Trust, Grosvenor Museum Society, Chester Archaeological Society*



Until 22 April

## Dead Normal: Death in Everyday Life

Exhibition Gallery One



Death is a universal occurrence – people have always died, and still do. The ways we have thought about and interacted with death depend on many factors and have changed over time. This exhibition explores the ways different cultures and communities have tried to make sense of the end of life, mourned their loved ones, and chosen to remember them.

*Supported by Co-op Funeralcare*

Until 7 July

## Unexpected Elegance: Female Fashion from the 1970s

Costume Gallery

The 1970s are often called 'the decade that taste forgot', but the dresses in this small exhibition show that this was far from true. From minis to midis and maxis, in fabrics ranging from cotton and corduroy to polyester and fake leopard-skin, with designs by Ossie Clark, Givenchy and Zandra Rhodes, we celebrate some of the more subtle pleasures of 1970s fashion.



5 February – 10 December

## Charles Kingsley: Christian Socialist and Natural Historian

Chester Cathedral Library

Open by appointment with George Brooke on 01244 351432 or [george.brooke@manchester.ac.uk](mailto:george.brooke@manchester.ac.uk). No wheelchair access.

This exhibition commemorates the 200th anniversary of the birth of Charles Kingsley (1819-1875). It explores his activities as a social reformer, notably his interests in sanitation and clean water and, as reflected in his famous children's novel *The Water-Babies*, his campaign against the use of child chimney sweeps. The exhibition also engages with Kingsley as a natural historian and associate of Charles Darwin. He became a canon of Chester Cathedral in 1869 and established the Chester Society of Natural Science, which led directly to the founding of Chester's Grosvenor Museum.

# Exhibitions

Grosvenor Museum, Chester

2 March – 2 June

## David Ferry: The Invader's Guide to the Museum (and other places)

Exhibition Gallery Two



Tourists and hobbyists rely on helpful guides. Picture books on travel, history, gardening, cooking, knitting and DIY have provided David Ferry with material for his collages that explore our national heritage. Likewise museums, both large and small, serve as repositories of a shared culture. Arranged and re-arranged, their contents can tell different stories. Alongside an exhibition of his prints and books, Ferry will give his own interpretation of the Grosvenor Museum's collection through selected interventions. Guest-curated by Stephen Clarke, University of Chester.

20 April – 6 October

## Going the Distance: 480 Years of Racing at the Roodee

Coin Gallery

Once likened to racing on 'green velvet' by jockey Lester Piggott, Chester's hallowed Roodee turf is uniquely positioned at the heart of the city. As the racecourse celebrates another milestone in its illustrious history, this exhibition presents objects and images from the Chester Race Company and the Grosvenor Museum to explore the origins and heritage of the oldest racecourse still in operation in Great Britain, if not the world.



CHESTER RACE  
COMPANY LTD.

10 May – 18 September

## The Grosvenor Museum's 13th Open Art Exhibition

Exhibition Gallery One

Discover the wealth of local creative talent in this diverse and stimulating exhibition, selected from hundreds of entries in open competition. Enjoy a kaleidoscope of colours and styles, a wide range of techniques and materials, and a rich variety of subjects and moods. There will definitely be things you will love, and maybe a few you will hate: come and vote for your favourite!



## Calling All Artists!

The Grosvenor Museum's 13th Open Art Exhibition opens in May 2019. This biennial show celebrates the best of the region's contemporary art, providing a diverse and stimulating exhibition for the public and giving artists in the area an opportunity to show their work. Entry forms are available after 1 February from Samantha Belsham, telephone 01244 972197, e-mail [samantha.belsham@cheshirewestandchester.gov.uk](mailto:samantha.belsham@cheshirewestandchester.gov.uk).



Children's activities are aimed at 4 to 12 years unless otherwise stated. Children must be accompanied by an adult. Please contact the Museum Shop 01244 972112 for group bookings.

West Cheshire Museums Exhibitions and Events 05

# Family Events

Grosvenor Museum, Chester

## Fridays 1 February, 1 March, 5 April, 3 May, 7 June Grosvenor Museum 'Quiet' Afternoons

3-4.30pm, drop-in.  
Suggested donation £2.

For those who enjoy a 'quieter' visit to the museum, including people living with autism, their families and carers. Our 'quiet' afternoons are themed, with hands-on activities to engage all ages and abilities. Pre-visit orientation pack available on request from Virginia Kettle on 01244 972120 or [virginia.kettle@cheshirewestandchester.gov.uk](mailto:virginia.kettle@cheshirewestandchester.gov.uk).

## Mondays 11 February, 11 March, 13 May

### Museum Explorers

Natural Cheshire Gallery  
Arrive 9.50am for 10-11am. £2.  
Especially for ages 2-4, although younger siblings are also welcome. Come and explore nature's changing seasons and discover lots of exciting things from the past through play, crafts, stories and songs.



## Monday 18 February Dead Normal: A Pop-Up Archive Newstead Gallery



10.30am-12.30pm & 2.30-4.30pm,  
drop-in. £2.  
Horrible Handwriting! Decipher a 17th-century remedy for the plague. Cause of death? Ask the coroner, who's been recording sudden deaths in Chester since 1442! This is a hands-on collections experience with Cheshire Archives.

## Tuesday 19 February Day of the Dead Mask Making Newstead Gallery



2-4pm, drop-in. £2.  
Free, suggested donation £1.50.  
*El Día de los Muertos* – the Day of the Dead – when lost loved ones are remembered and their lives celebrated by donning colourful clothes and painting skulls on faces. Come and make your own Day of the Dead inspired mask to take home.

## Wednesday 20 February Daffodil Windmills Newstead Gallery 2-4pm, drop-in. £2.

"A host, of golden daffodils ...  
Fluttering and dancing in the breeze".  
Bring in the spring by making a daffodil-style windmill to take home!



## Thursday 21 February Make your own Shrine Newstead Gallery 2-4pm, drop-in. £2.

Join us to make a colourful shrine in celebration of your personal heroes who have helped make your life a pleasure to live.



# Family Events

Grosvenor Museum, Chester

**Tuesday 2, Saturday 6,  
Thursday 11, Sunday 14 April**  
**Disney Film Classic:  
Alice in Wonderland  
(1951)**

Lecture Theatre



11am-12.15pm (2-3.15pm on Sunday). Free, but booking essential through [experiencechester.co.uk](http://experiencechester.co.uk). Lewis Carroll's fantasy comes to life in this animated classic. When Alice falls down a rabbit hole, she enters a magical world where she encounters an odd assortment of characters, including the grinning Cheshire Cat and the goofy Mad Hatter. When Alice ends up in the court of the tyrannical Queen of Hearts, she must stay on the ruler's good side – or risk losing her head.  
*Brought to you by CH1 Chester BID*

**Thursday 2 April**  
**Fantastic Fossils**

Newstead Gallery

12.30-2.30pm, drop-in. £2.  
Come and learn about uncovering fossils and then make your very own fossil to take home.

**Wednesday 3 April**  
**Fish Houses**

Newstead Gallery

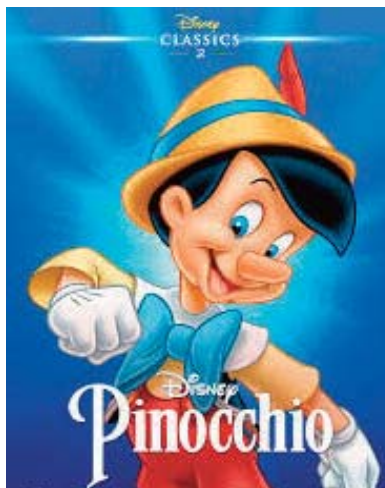
12.30-2.30pm, drop-in. £2.  
Inspired by David Ferry's wonderfully quirky images, make a 3D shadow box picture of fish swimming through the rooms of a country house.



**Thursday 4, Sunday 7,  
Wednesday 10, Saturday 13 April**  
**Disney Film Classic:  
Pinocchio (1940)**

Lecture Theatre

11am-12.30pm (2-3.30pm on Sunday). Free, but booking essential through [experiencechester.co.uk](http://experiencechester.co.uk). When the woodworker Geppetto sees a falling star, he wishes that Pinocchio – the puppet he has just finished making – could become a real boy. That night, the Blue Fairy grants Geppetto's wish and asks Jiminy Cricket to serve as the wooden boy's conscience. But the naive and trusting Pinocchio falls into the clutches of the wicked Honest John, who leads him astray to Pleasure Island.  
*Brought to you by CH1 Chester BID*



**Thursday 4 April**  
**Flower Wreaths**

Newstead Gallery

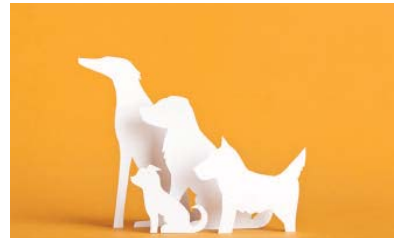
12.30-2.30pm, drop-in. £2.  
As beautiful spring flowers are starting to bloom, join us in making your very own flower wreaths.



**Tuesday 9 April**  
**Ghost Dogs**

Newstead Gallery

12.30-2.30pm, drop-in. £2.  
Take a look at our *Dead Normal* exhibition, then join us to make your very own spooky ghost dog.



**Wednesday 10 April**  
**Butterfly Planters**

Newstead Gallery

12.30-2.30pm, drop-in. £2.  
Discover how to make your garden or school playground a flutterby-butterfly friendly zone! Sow your seedlings in pots made of recycled material, and make sun-catcher butterfly labels to help you remember the names of your plants.

**Thursday 11 April**  
**Paper Nests**

Newstead Gallery

12.30-2.30pm, drop-in. £2.  
With spring upon us, come and join us in making a paper nest complete with your very own bird to sit in it.





# Family Events

Grosvenor Museum, Chester

## Saturday 20 April Something to Do at the Weekend

### Newstead Gallery

11am-1pm. £2, includes all activities, proceeds to the Grosvenor Museum Youth Panel. Try an assortment of things you might not have done before, with activities coming from a 1960s book designed to spark the imagination in an age before computers. There'll be making a mouse out of a handkerchief, 'cooking' peppermint creams, butterfly identification using examples from the museum's collections, and a chance to stroke a giant white snail.

## Thursday 2 – Friday 31 May Grosvenor Park Archaeological Excavation

### Grosvenor Park

Cheshire West and Chester Council's archaeologists, in partnership with the University of Chester, are running their annual training excavation for 2nd year archaeology students in Grosvenor Park. Visitors are welcome, and the students will be on hand during weekdays (except Bank Holidays), to tell you about the park's Roman and medieval archaeology.



## Saturday 25 May Chester Heritage Festival Launch: Roman Day

### Chester Racecourse



11.30am-6pm.

This year's Heritage Festival will be launched at the Roman Day on Britain's oldest racecourse, established in 1539. At this family-friendly race day, youngsters can learn fascinating facts about their Cestrian ancestors and witness spectacular sporting displays both on and off the track. Chester Racecourse, the event sponsor, is giving Chester residents in postcodes CH1-CH4, and holders of this brochure, a half-price discount when tickets are purchased in person at the Chester Racecourse Box Office: for terms and conditions visit [www.chester-races.com/romanday](http://www.chester-races.com/romanday).



CHESTER RACE  
COMPANY LTD.

## Tuesday 28 May Silly Storybooks

### Newstead Gallery

12.30-2.30pm, drop-in. £2.

David Ferry makes surreal books by sticking pictures from one type of book onto the pages of another. Come and make your own little book filled with pictures you've chosen and cut out of magazines, and write a story to go with the pictures.

## Wednesday 29 May The Terrific Triassic

### Newstead Gallery

12.30-2.30pm, drop-in. £2.

A strange alien creature wends its way across a barren scarlet desert ... welcome to Cheshire in the Terrific Triassic era! Check out some of the weird creatures and habitats of the era, and experiment to discover how that distant past has shaped our present.

## Wednesday 29 May Grosvenor Park Archaeological Excavation: Open Afternoon

### Grosvenor Park

1-4.30pm, drop-in. Free.

Come and see what the University of Chester's archaeology students have discovered this year in Grosvenor Park, with site tours and a display of objects found by the students.

## Thursday 30 May Cupcakes!



### Newstead Gallery

12.30-2.30pm, drop-in. £2.

Inspired by the cakes in David Ferry's book *Cake Walking in Scotland*, decorate – and eat! – some cupcakes.

# Adult Events

Grosvenor Museum, Chester

**Every day of the year**

## Guided Walking Tours of Chester with the Guild of Chester Tour Guides

Meet at the Visitor Information Centre, Town Hall Square

10.30am-12noon (plus 2-3.30pm Easter – October). £8, £7 concessions, tickets from guide. [www.chestertours.org.uk](http://www.chestertours.org.uk).

Your guide will lead you on a captivating journey through 2,000 years of history, taking in all the main sites along the way, including the Rows, Walls, River and the exterior of the Cathedral. Discover Chester's rich heritage, beginning in Roman times, through the vibrant period of medieval expansion, the desperation of the Civil War, Georgian elegance and Victorian revival, right up to the present day.



**Thursdays 24 January, 7 & 21 February, 7 & 21 March, 4 & 18 April, 2, 16 & 30 May**

## Café Crafts

Museum Café

2-4pm. £3, including tea or coffee. Join Tracey Todhunter, freelance knitwear designer and author of *Woman's Weekly Guide to Crochet*, for an afternoon of craft and chat in our 1940s café. Bring along your own project or feel free to join in with one of ours. Everyone is welcome – whether you're a master or a beginner, Tracey will be on hand to help.

**Tuesday 12 February**

## An Apt Person for the Job: The Work of an Anatomical Pathology Technician

Lecture Theatre

7.30-8.30pm. Donation £3.

Jane Ruskin began her career as an APT in 1980, aged just seventeen. Since then she has cared for many thousands of deceased patients, run a busy mortuary single-handed, assisted in many murder investigations, and sought to further aesthetic developments in the post-mortem process. Her philosophy is that everyone, regardless of rank or station in life, is entitled to respect and the best of care when their life has ended. Join Jane for a fascinating talk about her career.

**Wednesday 13 February**  
**My Funny Valentine**

Lecture Theatre

7.30-9pm. £10, with a free drink: tickets from [www.ticketsource.co.uk/westcheshiremuseums](http://www.ticketsource.co.uk/westcheshiremuseums).

Join us for a romantic night with a difference! Comedians from up and down the country will become professors and comment on the museum's collections, filling you in on what they actually are. The catch? They have never seen any of the slides before and will be making up on the spot. It's *Time Team* meets *Who's Line is it Anyway* and promises to be a hilarious night.



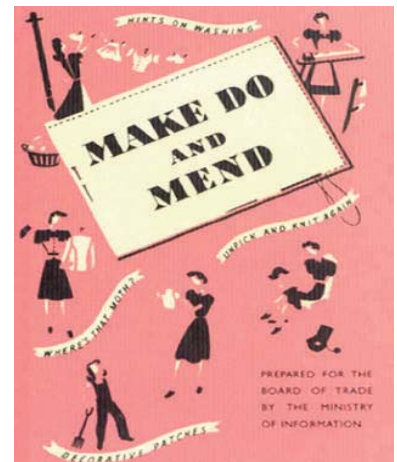
**Thursday 14 February**

## Make Do and Mend!

Lecture Theatre

3-4.30pm, drop in. Donation £2.

Join us for an afternoon of making, doing and mending, inspired by the creative resourcefulness of people during wartime. Enjoy 1940s-themed refreshments and a film show. Make a simple craft item to take home. This activity is aimed at older people, those living with dementia, and their families and carers.



**Friday 15 February**

## Tombs and Memorials in Chester Cathedral

Meet at Chester Cathedral

admissions desk in the Undercroft  
11am-12noon. £5, pay on the door or in advance on 01244 500959.

Join Nick Fry, the cathedral's Bedesman, for a look at some of the memorials and those commemorated in Chester Cathedral, ranging from tobacconists, aristocrats and candle merchants to the armed services and everything in between. The memorials have many different stories to tell, from the heart-breaking to the light-hearted, but all tell us something of their times.



# Adult Events

Grosvenor Museum, Chester

**Saturday 16 February**

## A Loop in Time: The Story of Puddington

Lecture Theatre

2-3pm. Donation £3.

Puddington is Chester's furthest outpost. Writer and broadcaster Gee Williams, co-author of *A Loop in Time*, explores the 5,000 year survival of this strange and secretive place. Sir Gawain in pursuit of his Green Knight, Liverpool slavers, one real saint, a great scientist, and a 20th-century style icon: why were they all here?

**Friday 22 February**

## Life Masks

Education Workroom

10.30am-12.30pm & 2.30-4.30pm.

Donation £3: book at [www.ticketsource.co.uk/westcheshiremuseums](http://www.ticketsource.co.uk/westcheshiremuseums).

Making masks of a dead person's face used to be a popular way to remember them. Join the staff of Co-op Funeralcare to make and take home your own 'Life Mask', modelled on your own face.

**Thursday 7 March**

## An Audience with an Undertaker

Lecture Theatre

7-8pm. Donation £3.

Co-op Funeralcare is the largest funeral director in the United Kingdom, and has been serving families in the community for decades. This talk, by a Senior Funeral Director, explores the history of the company and its varied daily work.

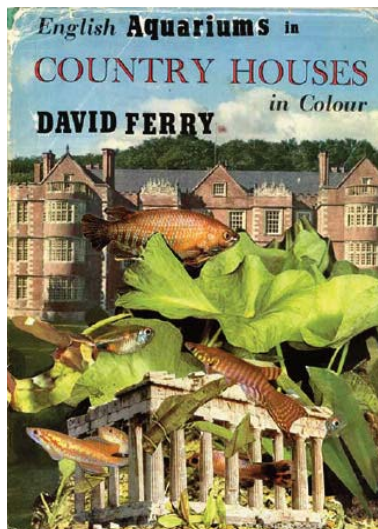
**Wednesday 13 March**

## The Invader's Guide to David Ferry

Lecture Theatre

2.30-3.30pm. £3, pay at the door, includes a hot drink.

Stephen Clarke, Lecturer in Critical and Contextual Studies at the University of Chester and guest curator of the *David Ferry* exhibition, gives an overview of David's career and work, from Blackpool to London to President of the Royal Society of Painter-Printmakers.



**Saturday 16 March**

## Disabled Access Day

Ground Floor Galleries

10.30am-5pm, drop-in. Donation £3.

Join us for scheduled talks throughout the day about the collections on display in the less accessible galleries – see [www.westcheshiremuseums.co.uk](http://www.westcheshiremuseums.co.uk) for times. There will be objects from the collections available for handling, suitable for all ages and abilities, plus dementia and autism friendly areas.

**Wednesday 20 March**

## The Public Archaeology of Frontiers and Borderlands:

## The 4th University of Chester Archaeology Student Conference

Lecture Theatre

9am-5pm. Donation £3.

From Hadrian's Wall to Offa's Dyke, from the Great Wall of China to the Berlin Wall, this conference explores the public archaeology of frontiers and borderlands. University of Chester students and guest speakers examine how archaeologists and archaeological research on frontiers and borderlands must navigate complex relationships and political discourses with communities both digital and tangible, contributing to how frontiers are conserved, managed and interpreted.

**Wednesday 20 March**

## Victorian Cemeteries

Lecture Theatre

7.30-8.30pm. Chester Civic Trust members free, non-members £5.

The Victorians celebrated death as a part of human experience. Join Mike Higginbottom to discover the great Victorian cemeteries, which contain some of the most evocative and moving examples of the period's architecture, landscaping, statuary and monumental art, and which document beliefs, attitudes and taste as well as lives.

*A Chester Civic Trust event*



# Adult Events

Grosvenor Museum, Chester

**Saturday 23 March**

## Art and Architecture of Liverpool: Lecture by Adrian Sumner

Lecture Theatre

2-3.15pm. £5, refreshments included: tickets from [www.ticketsource.co.uk/cheshire-west-voluntary-arts-network](http://www.ticketsource.co.uk/cheshire-west-voluntary-arts-network).

The Pool of Life, as Jung called it, has sprung back to life after a period of trials and tribulations, to look like the world-class city that it has always been. This lecture looks at buildings and collections, art and artists, and the personalities and spirit which make the city unique and endlessly surprising.

*All proceeds to the Cheshire West Voluntary Arts Network*



**Wednesday 27 March**

## Dead Normal: A Pop-Up Archive

Lecture Theatre

10.30am-12.30pm & 2.30-4.30pm, drop-in. £2.

Horrible Handwriting! Decipher a 17th-century remedy for the plague. Cause of death? Ask the coroner, who's been recording sudden deaths in Chester since 1442! This is a hands-on collections experience with Cheshire Archives.

**Thursday 28 March**

## Ashes into Glass: Contemporary Commemorative Jewellery

Lecture Theatre



7-8.30pm. Donation £3.

Ashes into Glass is the leading creator of ashes jewellery in the United Kingdom and worldwide. They produce fine jewellery for you to connect with your loved one by wearing it or just holding it in your hand. Join Ashes into Glass to hear how they create their specialist range of jewellery and glassware, with refreshments provided by Co-op Funeralcare.

**Wednesday 3 April**

## Carry On with Cake

Lecture Theatre

1.30-3.30pm. £5, includes cake and tea: tickets from [www.ticketsource.co.uk/westcheshiremuseums](http://www.ticketsource.co.uk/westcheshiremuseums).

Join us for *Carry On Henry*, a towering example of bawdy British humour featuring a Henry VIII very loosely based on historical fact. Before the film there will be a short talk by Stephen Clarke, Lecturer in Critical and Contextual Studies at the University of Chester and curator of our *David Ferry* exhibition, looking at the importance of farce in British culture and David's love of the genre. There will also be cakes available, as featured in David's series *Cake Walking in Scotland*.

*Presented in partnership with CH1 Chester BID*

**Thursday 11 April**

## The Story of the Hospice of the Good Shepherd

Lecture Theatre

7.30-8.30pm. Donation £3.

The Hospice of the Good Shepherd, which provides palliative and end of life care to people living with a progressive life limiting illness, is celebrating its 30th anniversary this year. Liz Taylor charts the history of this vital organisation and addresses some of the current issues faced when caring for people in this setting. Liz is the Director of Clinical Services at the hospice, and has over 20 years of nursing experience in cancer and palliative care services in hospital, hospice and community settings.

**Wednesday 17 April**

## Death is Not the End: Preparing for Eternity in Ancient Egypt

Lecture Theatre

2-3pm. Donation £3.

The modern perception of ancient Egypt is that its inhabitants were morbidly obsessed with death. However, it is more accurate to see them as obsessed with *life*, and willing to do whatever it took – be that removing the brain using a hook up the nose of a corpse, or filling a tomb with magical figures to be with you in the afterlife – to ensure they existed for eternity.





# Adult Events

Grosvenor Museum, Chester

## Wednesday 24 April Daphne in the Dark

### Lecture Theatre

7-9.30pm. £8, includes a glass of wine: tickets from [www.ticketsource.co.uk/westcheshiremuseums](http://www.ticketsource.co.uk/westcheshiremuseums).

Join us for an atmospheric showing in a darkened museum of the 1973 thriller *Don't Look Now*, based on Daphne du Maurier's short story and starring Julie Christie and Donald Sutherland. Before the film there will be a short talk by Stephen Clarke, Lecturer in Critical and Contextual Studies at the University of Chester and curator of our *David Ferry* exhibition, on David's residency in Venice and how the film and city inspired his work.

*Presented in partnership with CH1 Chester BID*

## Wednesday 15 May Chester's Civil War: regional capital or damp squib?

### Lecture Theatre

1-2pm. £3, pay at the door.

In the first of three lectures examining the English civil war of 1642-46 in this region, Professor Peter Gaunt explores Chester as a royalist stronghold and parliamentarian objective. He assesses the role which the city might have played, perhaps should have played and in reality actually did play in the war waged by the two sides, as seen from (often starkly differing) local, regional and national perspectives.

*A University of Chester event*

## Wednesday 22 May Cheshire's Civil War: three months of action, three years of stalemate

### Lecture Theatre

1-2pm. £3, pay at the door.

In the second of three lectures examining the English civil war of 1642-46 in this region, Professor Peter Gaunt explores the civil war within Cheshire. He assesses the key aspects of the county's war and in particular how and why, after much of the county had been conquered and secured by parliament early in the conflict, the war then turned out to be something of a long-drawn-out and rather static stalemate.

*A University of Chester event*

## Thursday 23 May Britain in the Fifties

### Lecture Theatre

3-4.30pm, drop-in.

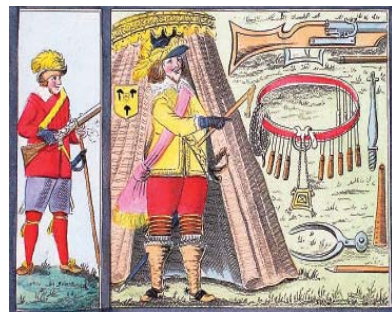
Suggested donation £2.

A chance to enjoy a nostalgic look at Britain during the 1950s in the comfort of our Lecture Theatre. Film show, plus handling session with artefacts from the decade and 1950s-themed refreshments. This activity is aimed at older people, those living with dementia, their families and carers.



## Wednesday 29 May North Wales's Civil War: there's a war on, but where's the fighting?

### Lecture Theatre



1-2pm. £3, pay at the door.

In the third of three lectures examining the English civil war of 1642-46 in this region, Professor Peter Gaunt looks west, across the border, to reassess the standing and nature of royalism in northern and mid Wales. He examines the very different experience of the war there and explores how parliament and parliamentarian generals based in neighbouring Cheshire and Shropshire eventually managed to quell and overcome North Walian royalism.

*A University of Chester event*

# Corporate Partnerships at the Grosvenor Museum

Grosvenor Museum, Chester

We are delighted to welcome the Grosvenor Museum's founder Corporate Partners:

## Gold Partner



**Cheshire College  
South & West**



## Silver Partner



**CHESTER RACE  
COMPANY LTD.**

## Bronze Partner



**SYKES  
HOLIDAY COTTAGES**

As a Corporate Partner you and your business can show a real passion for social responsibility and enjoy a wide range of special benefits, including brand exposure to over 80,000 visitors every year and more online.

## Membership benefits include:

- Free use of the iconic Victorian lecture theatre for meetings and corporate entertainment
- VIP invitations to private events and exhibition openings
- Sponsor an item on public display
- Enjoy exclusive gallery tours and access behind the scenes at the museum

To receive a Corporate Partnership Scheme information pack and to discuss sponsorship opportunities for your business, please contact

Richard Hall on 01244 972094 or

[richard.hall2@cheshirewestandchester.gov.uk](mailto:richard.hall2@cheshirewestandchester.gov.uk).

West Cheshire Museums are delighted to have been chosen to be part of Chester Race Company's Project 1000.

## Chester History & Heritage

The History Hub @ The Grosvenor Museum, 27 Grosvenor Street, Chester, CH1 2DD

Visit Chester History & Heritage at The History Hub @ The Grosvenor Museum, with books, maps and photographic collections and our popular family history research service. Our wonderful Facebook and website pages are followed by well over 4,000 history lovers, and you can explore our online imagebank which boasts over 21,000 unique historic images of Chester.

Monday – Friday 10.30am-5pm. Closed Good Friday 19 April, Easter Monday 22 April, May Day Bank Holiday 6 May & Spring Bank Holiday 27 May

Telephone 01244 972115

Email: [CHH@cheshirewestandchester.gov.uk](mailto:CHH@cheshirewestandchester.gov.uk)

Find us on Facebook: Chester History and Heritage Centre

Follow us on Twitter @cwacmuseums

Website: [www.westcheshiremuseums.co.uk](http://www.westcheshiremuseums.co.uk)





# Stretton Watermill, Farndon

Mill Lane, Stretton, Farndon, SY14 7JA

Step back in time and visit one of the country's best preserved water powered corn mills. First recorded in 1351, Stretton Watermill was a working mill until its last miller retired in 1959. Visit the 19th-century stable block to learn about the history of the mill and explore models of the building and its machinery. One of our millers will then take you on a fascinating tour to see the ancient wooden machinery in action, listen to stories, and have a go at milling grain. Bring a picnic and enjoy the idyllic rural setting with beautiful views of the pond and mill buildings.

Telephone 01606 271640  
Find us on Facebook: Grosvenor Museum and Stretton Watermill  
Follow us on Twitter @cwacmuseums  
Website: [www.westcheshiremuseums.co.uk](http://www.westcheshiremuseums.co.uk)



## Volunteers

Please see all West Cheshire Museums volunteering roles on the website  
[www.westcheshiremuseums.co.uk](http://www.westcheshiremuseums.co.uk)

## Disabled access

Accessible toilet, ramp to first floor of mill.

## Admission

Cash only. Adult £3.50, child £1.80. Charges may rise in April.

April: Weekends and Bank Holiday  
Monday 1-5pm. May to August:  
Tuesday – Sunday and Bank Holiday  
Mondays 1-5pm.

## Exhibition

### 20 May – 29 September Crafting the Woods: Water and Wildlife

Crafters, young and old, are invited to create a menagerie of creatures, flora and fauna which will nestle in the magical woodland of Stretton for the summer: knitted ladybirds, felted foxes and turned toadstools have all been spotted here. To find out how to exhibit, email [artswest@cheshirewestandchester.gov.uk](mailto:artswest@cheshirewestandchester.gov.uk)



## Events

### Saturday 11 & Sunday 12 May Get Creative: Water and Wildlife 1-5pm, drop in. £2



Make your own crafted creature to join the *Crafting the Woods* exhibition of birds, bees, butterflies, fish, frogs, dragonflies – let your imagination run wild! This is part of the BBC's *Get Creative* campaign, and your contribution to the exhibition will be on display all summer.



# Weaver Hall Museum & Workhouse

162 London Road, Northwich, CW9 8AB

Weaver Hall Museum & Workhouse is full of displays and tales of the history and industry of West Cheshire. The stories are told through films, reconstructions, models and vivid displays of intriguing artefacts, which relate to local industry, market towns, transport, archaeology, and the building's history as the Northwich Union Workhouse. An exhibition in the former workhouse schoolroom explores life for the paupers. Around the rest of the museum you can find out about workhouse food, discover some of the people who lived here, and visit the recreated Master's sitting room.



## Admission

Adult £3.50, concession £2.50, child £1.80. Other ticket options available. Free access to temporary exhibitions (donations welcome) and the coffee shop and gift shop. Charges may rise in April.

Tuesday – Friday, school holiday Mondays, Good Friday & Bank Holiday Mondays 10am-5pm, Saturday & Sunday 2-5pm.



Telephone **01606 271640**

Find us on Facebook: **Weaver Hall Museum and Lion Salt Works**

Follow us on Twitter **@cwacmuseums**

Website: **[www.westcheshiremuseums.co.uk](http://www.westcheshiremuseums.co.uk)**

## Support us

The Friends of Weaver Hall offer vital support for the museum. Friends enjoy a full and varied programme of events including evening talks and film nights. See **[www.fowhm.org.uk](http://www.fowhm.org.uk)**.

## Volunteers

Please see all West Cheshire Museums volunteering roles on the website **[www.westcheshiremuseums.co.uk](http://www.westcheshiremuseums.co.uk)**

## Disabled access

Wheelchair access is available throughout the museum.





# Exhibitions & Family Events

Weaver Hall Museum & Workhouse, Northwich

## Exhibitions

**1 February – 10 March**  
**LGBT History Month**



Following on from last year's successful event, Weaver Hall Museum hosts another exhibition and film festival organised by Silver Rainbows, a social network for older lesbian, gay, bisexual and trans people in Cheshire. Look out for details nearer the time at [www.silverrainbows.com](http://www.silverrainbows.com).

**16 March – 9 June**  
**Northwich Photographic Society**

An exhibition by local amateur photographers featuring images of the surrounding area. Northwich Photographic society holds regular meetings and exhibitions in the town.



## Family Events

Children's activities are aimed at 4 to 12 years unless otherwise stated. Children must be accompanied by an adult. Please contact 01606 271640 for group bookings

**Saturday 9 February**  
**Chinese New Year**

2-4pm, drop-in. £2 per child.  
Join us for a fun afternoon of crafts to celebrate Chinese New Year.



**Wednesday 20 & Thursday 21 February**  
**Victorian Toys**

10am-4pm, drop-in. £2 per child.  
Victorian children had to make their own toys out of materials they had at home. Come and create your own toy box.



**Wednesday 3 & Thursday 4 April**  
**Paint, Hide and Find a Rock**



10am-4pm, drop-in. £2 per child.  
Decorate a stone and hide it in the museum grounds for someone else to find.

**Wednesday 10 & Thursday 11 April**  
**Wind Chimes**

10am-4pm, drop-in. £2 per child.  
Make a wind chime from recycled and found materials..



**Saturday 20 April**  
**Fabergé Eggs**

2-4pm, drop-in. £2 per child.  
Come along to the museum and make your own Fabergé-style egg.



# Family & Adult Events

Weaver Hall Museum & Workhouse, Northwich

**Wednesday 29 & Thursday 30 May**

## Pop Bottle Rockets

10am-4pm, drop-in. £2 per child.

3-2-1 blast off! Back by popular demand! Make a rocket to launch in the museum grounds..



## Adult Events

**Fridays 25 January, 22 February, 29 March, 26 April, 31 May**

## Craft and Chat

10.30am-12.30pm. £3, including tea or coffee.

Meet like-minded crafters, learn a new skill, and enjoy a cup of tea in the relaxed setting of Weaver Hall Museum's café. There will be demonstrations and projects to work on. Suitable for all levels of experience.



**Friday 15 February**

## Kissing Frogs

7.30-8.40pm. £10, book at the museum or at [www.eventbrite.co.uk](http://www.eventbrite.co.uk).

Meet Jessica Ramsbottom – or Jess to her friends. She's just turned 30, has no children, stuck in a dead-end job and is *still* single. In the whirlwind world of speed dating, online dating and one night stands, does her perfect man really exist? Will Jess find the man of her dreams, or will she be the only one of her friends destined for the shelf? This excruciatingly funny journey of love, loss and self-discovery, set to a backdrop of classic hits from the 80s, is performed by Sophie Osborne.



**Wednesday 27 February**

## Beneath Croxton's Field

3-4pm. £3, complimentary tea & coffee from 2.30pm.

Join West Cheshire Museums' very own Phil Cox to find out how the community project in Holt uncovered potential remains of a 3rd-century Roman settlement, previously lying undiscovered for centuries.



**Thursday 28 February**

## Friends Film Night 'Rabbit Proof Fence'

7 for 7.30-9.05pm. £5 (Friends of Weaver Hall £4), book at the museum.

Three little girls. Snatched from their mothers' arms. Spirited 1,500 miles away. Denied their very identity. Forced to adapt to a strange new world. They will attempt the impossible. A daring escape. A run from the authorities. Their one hope, find the rabbit-proof fence that might just guide them home.

*A Friends of Weaver Hall event*



# Adult Events

Weaver Hall Museum & Workhouse, Northwich

**Wednesday 27 March**

## The Renowned Robert Lenkiewicz



3-4pm. £3, complimentary tea & coffee from 2.30pm.

Join Peter J. Wildin to find out all about Robert Lenkiewicz, a post-War portrait painter who became notorious for his bohemian lifestyle and reputation as an anti-Establishment artist.

**Thursday 28 March**

## Friends Film Night 'Amazing Grace'

7 for 7.30-9.30pm. £5 (Friends of Weaver Hall £4), book at the museum.

*Amazing Grace* depicts the life of the 18th-century politician William Wilberforce, one of the youngest ever members of Parliament, whose legacy will be remembered for centuries. At the age of just 21, he found the courage to take on the British Empire in order to abolish slavery, over time becoming allies with Prime Minister William Pitt as the two men fought together to put an end to this inhuman trade. A Friends of Weaver Hall event

**Wednesday 24 April**

## The History Of Puddington

3-4pm. £3, complimentary tea & coffee from 2.30pm.

Puddington, a small Cheshire village, occupies a site that's been inhabited for over 5,000 years. Writer and broadcaster Gee Williams, co-author of *A Loop in Time: The Story of Puddington*, explores in words and images this strange and mysterious little place. Sir Gawain in pursuit of his Green Knight, Liverpool slavers, one real saint, a great scientist, and a 20th-century style icon: why were they all here?



**Thursday 25 April**

## Friends Film Night 'Funny Cow'

7 for 7.30-9.15pm. £5 (Friends of Weaver Hall £4), book at the museum.

A comedian, played by Maxine Peake, uses her troubled past as material for her stand-up routine, trying to rise up through the comedy circuit by playing Northern England's working men's clubs.

A Friends of Weaver Hall event

**Saturday 11 May**

## The Riot Act

3-4pm. Free, but book on 01606 271640.

On 12 August 1842 Lancashire factory workers marched in protest at appalling pay and conditions. Reaching Preston's Lune Street they were confronted by armed soldiers and read the Riot Act. By 13 August seven men had been shot and injured and four were dead. This intimate and simply-staged historical piece is performed by two actors and produced by Breathe Out Theatre.



**Wednesday 29 May**

## Congleton: A Town of Surprises

3-4pm. £3, complimentary tea & coffee from 2.30pm.

This talk with Ian Doughty from Congleton Museum will uncover some of the town's quirkier historical facts. Discover how Congleton is connected to the death of Charles I, the imprisonment of Napoleon, the Bank of England, and the Representation of the People Act of 1918.



# Lion Salt Works, Northwich

Ollershaw Lane, Marston, Northwich, Cheshire, CW9 6ES

The Lion Salt Works is a restored historic open-pan salt making site in the village of Marston, beside the Trent and Mersey Canal and close to the remarkable Anderton Boat Lift. This £10 million project opened in 2015 and was voted the UK's Best Heritage project in the 2016 National Lottery Awards. It offers a fascinating journey through the life of the country's last open-pan salt works. When exploring the site and its restored buildings, you will discover how the Salt Works operated and the impact of salt on mid-Cheshire's people, economy and landscape. Your visit will also set the scene for a wider exploration of the footpaths, waterways and attractions of the adjacent Northwich Woodlands and the Weaver Valley.



## Admission

Adult £6.25, concession £5.50, child £4. Other ticket options available. Free access to café, gift shop, butterfly garden, play area, canal towpath and car park. Charges may rise in April.

Museum open Tuesday – Sunday, Good Friday & Bank Holiday  
Mondays 10.30am-5pm. Play area and butterfly garden open daily  
9am-5.20pm.



General Enquiries **01606 275066**

Room Hire and Group Bookings **01606 275040**

Find us on Facebook: **Weaver Hall Museum and Lion Salt Works**

Follow us on Twitter **@cwacmuseums**

Website: **[www.westcheshiremuseums.co.uk](http://www.westcheshiremuseums.co.uk)**



## Support us

The Lion Salt Works Trust offers vital support including technical and historical advice, project and grounds development, visitor tours and a regular publication. To become a Saltie contact **[ngkhunt21@gmail.com](mailto:ngkhunt21@gmail.com)**.

## Volunteers

Please see all West Cheshire Museums volunteering roles on the website **[www.westcheshiremuseums.co.uk](http://www.westcheshiremuseums.co.uk)**.

## Disabled access

Wheelchair access is available across the whole site.



# Exhibitions & Family Events

Lion Salt Works, Northwich

## Exhibitions

### Until 17 February Visual Arts Cheshire presents Twelve Images of Northwich

Lion Salt Works is proud to be showcasing the twelve artworks that feature in Visual Arts Cheshire's 2019 Northwich calendar. Produced by local artists, these captivating images offer viewers twelve scenes of Northwich and surrounds, presenting the region's beautiful landscapes and incredible industrial heritage.



### 5 March – 27 May Wartime Industry and Working Women in Cheshire, 1914-1950

During the first half of the 20th century, Britain's involvement in the two World Wars led to a great shortage of industrial and mechanical labourers, necessitating a significant shift in the gender balance of the industrial workplace. Curated by Joseph Roberts, this exhibition explores Cheshire's important contribution to the war effort, the stories of the valiant women who kept the county (and country) going during the conflicts, and their continued contribution to local industry in the aftermath of war and beyond.

## Family Events

Children's activities are aimed at 4 to 12 years unless otherwise stated. Children must be accompanied by an adult. Please contact **01606 271640** for group bookings.

There is a suggested donation or charge for most events and activities. If you would also like to go round the Lion Salt Works museum and historic core, usual admission charges apply.

**Fridays 1, 8, 15 February & 1, 8 March**

### Little Lions Explorer Club

9.15-10.15am. Donation £3.

Calling all Little Lions to discover, play and create. Come and join our Early Years Explorer Club, aimed at ages 2-4 (younger siblings welcome). Loads of exciting activities, stories and popular songs. Bring your old clothes – things might get messy!



**Tuesday 19 & Wednesday 20 February**

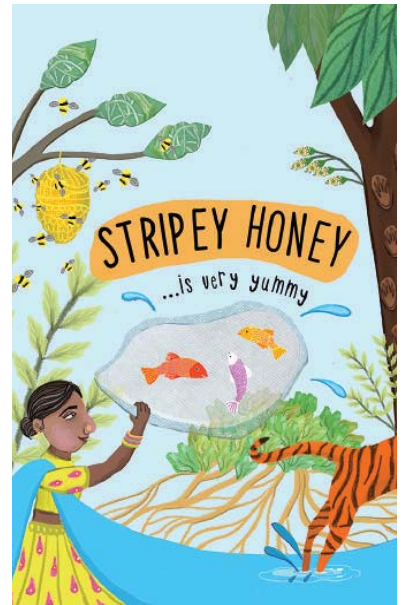
### Salt Sacks Printing

10.30am-12.30pm & 2-4pm, drop-in. £2.

Salt from the Lion Salt Works went all over the world, and special sacks were made for each country. Choose somewhere in the world and design a salt sack based on that country.

**Sunday 10 March**

### 'Stripey Honey is Very Yummy' by Mashi Theatre



11-11.50am. Adult £6.50, under-17 £4.50, family tickets available: book at Lion Salt Works in person or on 01606 275066 or visit [www.ticketsource.co.uk/cheshire-ruraltouringarts](http://www.ticketsource.co.uk/cheshire-ruraltouringarts).

Aimed at families with children aged 5-10, this touching and funny story tells how tigers, bees and honey collectors learn to live and play together. As fisher-women leave their boats on the river to collect honey, they look out for roaming tigers. They climb high into the trees to reach the giant bees, but what happens when the tigers lend them a paw? Adventure into the jungle with music, song, dance and puppetry, exploring the lives of endangered species who unite to save their homes.

*Supported by Cheshire Rural Touring Arts*

# Family Events

Lion Salt Works, Northwich

## Tuesday 2 & Wednesday 3 April Sprouting Spring

10.30am-12.30pm & 2-4pm,  
drop-in. £2.

Spring is here, and we have lots of fun activities linked to the nature and wildlife around Lion Salt Works. Come and join us as we celebrate the start of spring.



## Tuesday 9 & Wednesday 10 April Run Away to the Circus

10.30am-12.30pm & 2-4pm,  
drop-in. £2.

To celebrate the release of *Dumbo*, come and take part in some crafts all about circus fun!



## Sunday 19 May Salt Sunday: A Celebration of Salt

12.30-5pm. Donation £3.

In partnership with the Salt of the Earth network, enjoy this family-friendly mix of interactive art, salt-making, music, science demos, talks and performances.

[www.saltoftheearthnetwork.net](http://www.saltoftheearthnetwork.net)

## Saturday 25, Sunday 26 & Monday 27 May Live and Local presents a Bank Holiday Bonanza

11am-5pm. Free.

Family festival and fun day with outdoor stage, live music, children's activities, stalls, refreshments, hot food and much more. Enjoy the Bank Holiday at this traditional village festival with a contemporary twist, featuring local live bands throughout the day.



## Tuesday 28 & Wednesday 29 May Amaze by Science!

10.30am-12.30pm & 2-4pm,  
drop-in. £2.

Embrace your inner Mad Scientist! Excitement, intrigue and lots of fascinating experiments guaranteed!



## Saturday 8 & Sunday 9 June Heritage Transport Festival

10.30am-5pm.

Suggested donation £2.

This evocative festival of a bygone era gives visitors an opportunity to imagine what vintage transport would have been like in its heyday. You can enjoy a range of vehicles from the 19th and 20th centuries, including traction engines, miniature steam engines, working narrow boats, vintage cars and commercial vehicles. There is also a series of themed children's activities over the weekend.





# Adult Events

Lion Salt Works, Northwich

## Adult Events

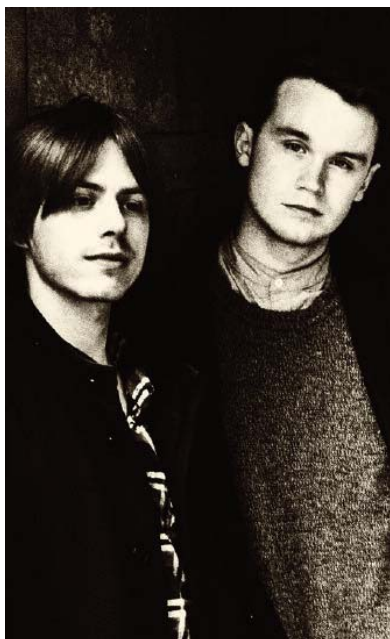
**Saturday 23 February**

**The Salt Works**

**Sessions: Sam Kelly & Jamie Francis**

7.30-10.30pm. £12.50, to book email [lswsessions@gmail.com](mailto:lswsessions@gmail.com) or ring 07796 175437.

"A captivating performer, Sam Kelly has one of the best young male voices in British acoustic roots music." Sam Kelly and Jamie Francis have gained a reputation for an incredibly high class and dynamic live show, becoming firm favourites at venues and festivals. Sam's fascination with music shines through, and his passion for discovering and re-kindling his musical heritage has gained him the respect of peers and audiences worldwide.



**Saturday 2 March**

**'Joan and Jimmy' by Blaize Theatre**

7.30pm-9.20pm. Adult £9.50, under-17 £6.50, family tickets available (show suitable for 12+): book at Lion Salt Works in person or on 01606 275066 or visit [www.ticketsource.co.uk/cheshire-ruraltouringarts](http://www.ticketsource.co.uk/cheshire-ruraltouringarts).

*Joan and Jimmy* tells the story of Joan Littlewood and her husband Ewan MacColl (aka Jimmy Miller) from 1945 to 1952. They founded Theatre Workshop in Kendal with a travelling troupe of storytellers and outlaws committed to the overthrow of the established order where the rich got richer and the poor got austerity. Known as the 'Mother of Modern Theatre', Littlewood devoted her life to community and political theatre.

*Supported by Cheshire Rural Touring Arts*

**Saturday 16 March**

**Signs of Spring: Photography Walk & Workshop**

11am-4pm. £20, pay on the day or online at [www.derekrandallphotography/workshops](http://www.derekrandallphotography/workshops).

Take advantage of the fantastic biodiversity of Northwich in this mainly field-based session. The season's change brings a wealth of subjects that can be explored through your lens. This session will use the arrival of spring to explore effective visualisation and image-craft. The walk and workshop are suitable for all levels of ability and equipment, including your camera-phone.

**Saturday 11 May**

**The Salt Works**

**Sessions: Rod Clements & Ian Thompson**



7.30-10.30pm. £12.50, to book email [lswsessions@gmail.com](mailto:lswsessions@gmail.com) or ring 07796 175437.

Founder member of folk-rock legend Lindisfarne, Rod Clements wrote their first chart hit *Meet Me On The Corner*, which became an instant classic. Rod has also pursued solo projects and collaborations with other eminent musicians and songwriters, including Raph McTell, Bert Jansch, Michael Chapman and Thea Gilmore. In recent years, Rod has emerged as a solo artist and respected slide guitar player, and he'll be joined tonight by Ian Thomson on double bass to play the classic songs Rod has written over the decades for Lindisfarne and many others.

# Diary



## Key

- Grosvenor Museum
- Stretton Watermill
- Weaver Hall Museum & Workhouse
- Lion Salt Works

## January

- Thursday 24  
Café Crafts
- Friday 25  
Craft and Chat

## February

- Friday 1  
Little Lions
- Friday 1  
'Quiet' Afternoon
- Thursday 7  
Café Crafts
- Friday 8  
Little Lions
- Saturday 9  
Chinese New Year
- Monday 11  
Museum Explorers
- Tuesday 12  
The Work of an Anatomical Pathology Technician
- Wednesday 13  
My Funny Valentine
- Thursday 14  
Make Do and Mend!
- Friday 15  
Little Lions

- Friday 15  
Tombs and Memorials in Chester Cathedral
- Friday 15  
Kissing Frogs
- Saturday 16  
The Story of Puddington
- Monday 18  
Dead Normal: A Pop-Up Archive
- Tuesday 19  
Salt Sacks Printing
- Tuesday 19  
Day of the Dead Mask Making
- Wednesday 20  
Victorian Toys
- Wednesday 20  
Salt Sacks Printing
- Wednesday 20  
Daffodil Windmills
- Thursday 21  
Victorian Toys
- Thursday 21  
Make your own Shrine
- Thursday 21  
Café Crafts
- Friday 22  
Life Masks
- Friday 22  
Craft and Chat
- Saturday 23  
Sam Kelly & Jamie Francis
- Wednesday 27  
Beneath Croxton's Field
- Thursday 28  
Film: Rabbit Proof Fence

## March

- Friday 1  
Little Lions
- Friday 1  
'Quiet' Afternoon
- Saturday 2  
Joan and Jimmy
- Thursday 7  
Café Crafts
- Thursday 7  
An Audience with an Undertaker
- Friday 8  
Little Lions
- Sunday 10  
Stripey Honey is Very Yummy
- Monday 11  
Museum Explorers
- Wednesday 13  
The Invader's Guide to David Ferry
- Saturday 16  
Disabled Access Day
- Saturday 16  
Photography Walk & Workshop
- Wednesday 20  
The Public Archaeology of Frontiers and Borderlands
- Wednesday 20  
Victorian Cemeteries
- Thursday 21  
Café Crafts
- Saturday 23  
Art and Architecture of Liverpool
- Wednesday 27  
Dead Normal: A Pop-Up Archive
- Wednesday 27  
The Renowned Robert Lenkiewicz
- Thursday 28  
Contemporary Commemorative Jewellery
- Thursday 28  
Film: Amazing Grace
- Friday 29  
Craft and Chat



# Diary

## April

- **Tuesday 2**  
Sprouting Spring
- **Tuesday 2**  
Film: Alice in Wonderland
- **Tuesday 2**  
Fantastic Fossils
- **Wednesday 3**  
Paint, Hide and Find a Rock
- **Wednesday 3**  
Sprouting Spring
- **Wednesday 3**  
Fish Houses
- **Wednesday 3**  
Carry On with Cake
- **Thursday 4**  
Paint, Hide and Find a Rock
- **Thursday 4**  
Film: Pinocchio
- **Thursday 4**  
Flower Wreaths
- **Thursday 4**  
Café Crafts
- **Friday 5**  
'Quiet' Afternoon
- **Saturday 6**  
Film: Alice in Wonderland
- **Sunday 7**  
Film: Pinocchio
- **Tuesday 9**  
Run Away to the Circus
- **Tuesday 9**  
Ghost Dogs
- **Wednesday 10**  
Wind Chimes
- **Wednesday 10**  
Run Away to the Circus
- **Wednesday 10**  
Film: Pinocchio
- **Wednesday 10**  
Butterfly Planters
- **Thursday 11**  
Wind Chimes
- **Thursday 11**  
Film: Alice in Wonderland

- **Thursday 11**  
Paper Nests
- **Thursday 11**  
The Story of the Hospice of the Good Shepherd
- **Saturday 13**  
Film: Pinocchio
- **Sunday 14**  
Film: Alice in Wonderland
- **Wednesday 17**  
Preparing for Eternity in Ancient Egypt
- **Thursday 18**  
Café Crafts
- **Saturday 20**  
Something to Do at the Weekend
- **Saturday 20**  
Fabergé Eggs
- **Wednesday 24**  
The History of Puddington
- **Wednesday 24**  
Daphne in the Dark
- **Thursday 25**  
Film: Funny Cow
- **Friday 26**  
Craft and Chat

## May

- **Thursday 2**  
Café Crafts
- **Friday 3**  
'Quiet' Afternoon
- **Saturday 11**  
Get Creative: Water and Wildlife
- **Saturday 11**  
The Riot Act
- **Saturday 11**  
Rod Clements & Ian Thompson
- **Sunday 12**  
Get Creative: Water and Wildlife
- **Monday 13**  
Museum Explorers
- **Wednesday 15**  
Chester's Civil War
- **Thursday 16**  
Café Crafts

- **Sunday 19**  
Salt Sunday
- **Wednesday 22**  
Cheshire's Civil War
- **Thursday 23**  
Britain in the Fifties
- **Saturday 25**  
Bank Holiday Bonanza
- **Saturday 25**  
Chester Heritage Festival Launch: Roman Day
- **Sunday 26**  
Bank Holiday Bonanza
- **Monday 27**  
Bank Holiday Bonanza
- **Tuesday 28**  
Amaze by Science!
- **Tuesday 28**  
Silly Storybooks
- **Wednesday 29**  
Pop Bottle Rockets
- **Wednesday 29**  
Amaze by Science!
- **Wednesday 29**  
Terrific Triassic
- **Wednesday 29**  
North Wales's Civil War
- **Wednesday 29**  
Grosvenor Park Archaeological Excavation Open Afternoon
- **Wednesday 29**  
Congleton: A Town of Surprises
- **Thursday 30**  
Pop Bottle Rockets
- **Thursday 30**  
Cupcakes!
- **Friday 31**  
Craft and Chat

## June

- **Friday 7**  
'Quiet' Afternoon
- **Saturday 8**  
Heritage Transport Festival
- **Saturday 9**  
Heritage Transport Festival

## Grosvenor Museum Chester History & Heritage

27 Grosvenor Street, Chester, CH1 2DD



## Stretton Watermill

Mill Lane, Stretton, Nr. Farndon, SY14 7JA



## Weaver Hall Museum and Workhouse

162 London Road, Northwich,  
CW9 8AB



## Lion Salt Works

Ollershaw Lane, Marston,  
Northwich, CW9 6ES



## Accessing Cheshire West and Chester Council information and services

Council information is also available in Audio, Braille and Large Print formats. If you would like a copy in any of these formats or in another language, please email us at [equalities@cheshirewestandchester.gov.uk](mailto:equalities@cheshirewestandchester.gov.uk) We are also able to provide a British Sign Language (BSL) interpreter to support customers with accessing Council services.

Tel: 0300 123 8 123    Textphone: 01606 867 670  
email: [equalities@cheshirewestandchester.gov.uk](mailto:equalities@cheshirewestandchester.gov.uk)  
web: [www.cheshirewestandchester.gov.uk](http://www.cheshirewestandchester.gov.uk)